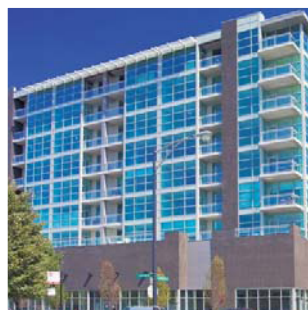




NC 82 STH Door System



NC 82 STH

Features

- 6063-T5 Aluminum Alloy Frame
- Frame Depth 82 mm [3 1/4"]
- Max Glass Size 38 mm [1 1/2"]
- Weather Stripping: EPDM Gaskets
- Thermal Barrier: Polyamide
- Heavy Duty Hinges
- Multi-Point Lock System
- Durable Components

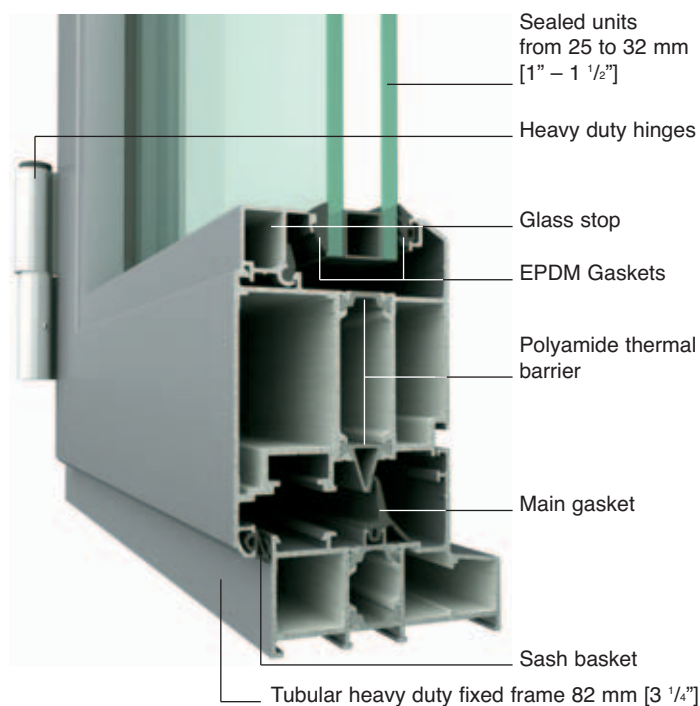
Benefits

- Acoustic Insulation
- Thermal Insulation
- Quiet and Smooth Closing System
- Easy Maintenance

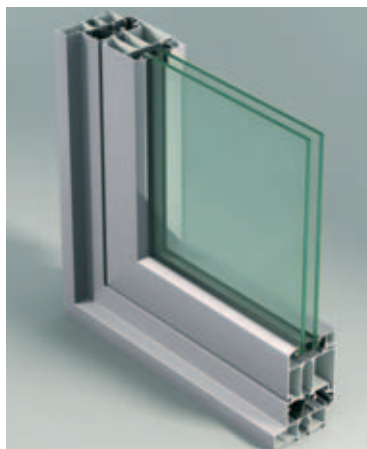
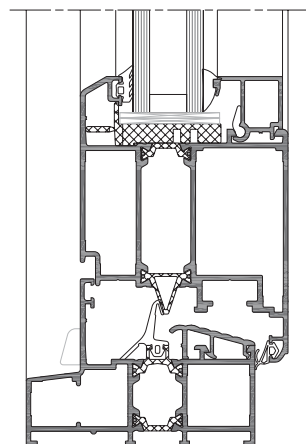
Applications

- Doors
- Fixed Windows
- Operable Windows

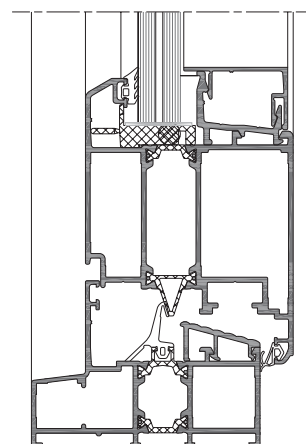
Technology



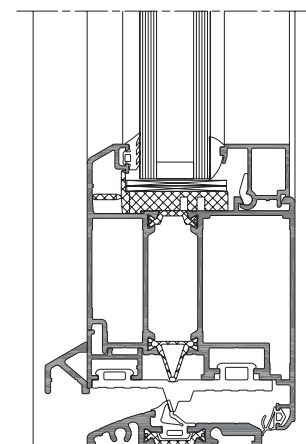
Standard solution







Hurricane-proof solution



ADA solution

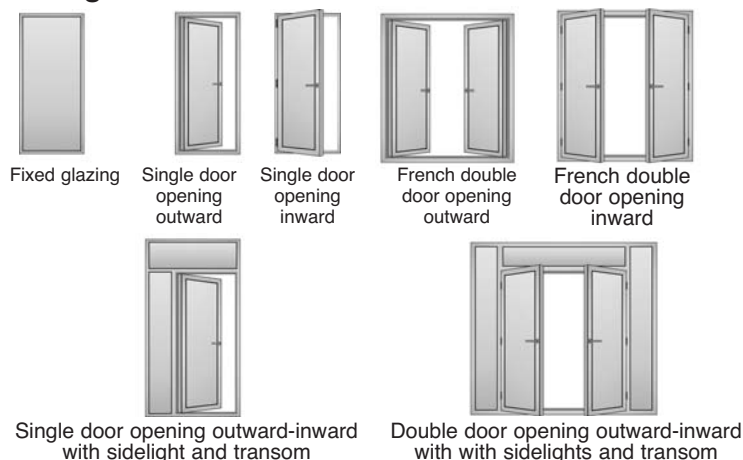


Performance data

Tested Configuration	Specimen Size	Threshold	AAMA/WDMA/CSA 101/I.S.2/A440-05		TAS
			AAMA	CSA	
 Side lite	1220 x 2440 mm [48" x 96"]	-	C 90	-	DP100
			Design pressure: 6436 Pa [135 psf]		Structural load: DP100
			Water penetration: 720 Pa [15 psf]		Cycling test: DP100
 Transom	2440 x 762 mm [96" x 30"]	-	C 90	-	-
			Design pressure: 6436 Pa [135 psf]		
			Water penetration: 720 Pa [15 psf]		
 Single Door Opening Inward	1220 x 2440 mm [48" x 96"]	Standard threshold	ATD-AW75	ATD-AW75	-
		ADA threshold	Design pressure: 5386 Pa [112 psf]	Forced entry: F20	
			Water penetration: 720 Pa [15 psf]	Water resistance: B7	
			-	Wind load: C5	-
			ATD-AW 55 / SHD-AW 55	Air infiltration: A3	
			Design pressure: 3926 Pa [82 psf]	-	
 Double Door Opening Inward	2440 x 2440 mm [96" x 96"]	Standard threshold	ATD-AW70	ATD-AW70	DP100 *
		ADA threshold	Design pressure: 5027 Pa [105 psf]	Forced entry: F20	Structural load: DP100
			Water penetration: 720 Pa [15 psf]	Water resistance: B7	Cycling test: DP70
			-	Wind load: C5	-
			SHD-C35	Air infiltration: A3	-
			Design pressure: 1675 Pa [35 psf]	-	-
			Water penetration: 720 Pa [15 psf]	-	-

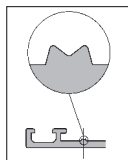
*: TAS large missile impact test performed on Opening Outward Double Door

Configurations

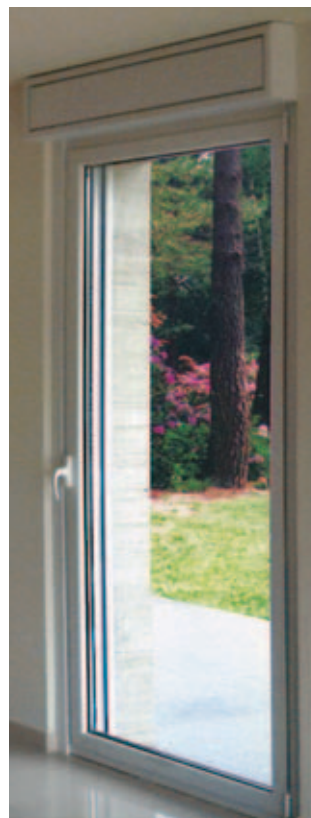


Quality

METRA stands for quality and optimal performance.
Only original METRA profiles and accessories can certify the highest performance.
Original METRA products have an "M" mark on the interior surface.



METRA quality is certified by ISO 9001.
METRA controls the entire process of production for the extrusions.
Manufacturing and installation of final products are performed through a network of independent specialists.





METRA Systems
1995 Industrial Blvd. - Laval, QC H7S 1P6, Canada
Tel. +1 450 629 1806 - Fax +1 450 629 7313
info@metrasystem.com
www.metrasystem.com



METRA
METRA S.p.A.
Via Stacca, 1 - 25050 Rodengo Saiano (BS) Italy
Tel. +39 030 6819.1 - Fax +39 030 6819 990
metra@metra.it
www.metra.eu

METRA prints on ecologically friendly paper
and uses printing products with low
environmental impact.



METRA Products

Architectural Envelope

Entrances & Windows

Special Systems

Sliding Systems

Accessories

01/2009